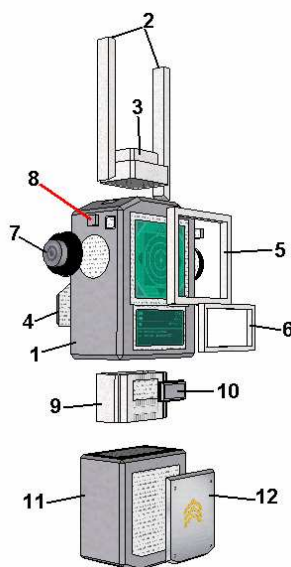
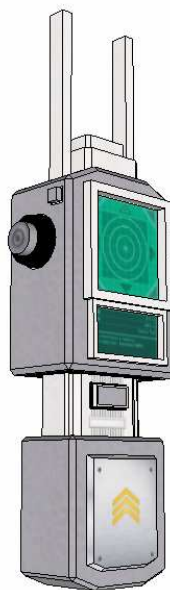


ASSEMBLY INSTRUCTIONS

Entropia Universe Fan Art Papercraft

Energy Matter Finder

By Gustav “Malasuerte” Sagitta



— — — Mountain fold

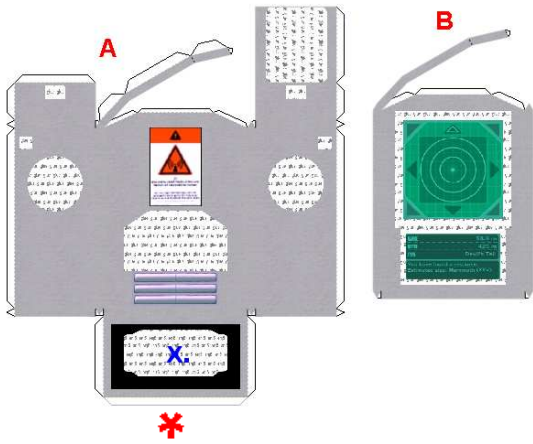
- - - - - Valley fold

————— Cut

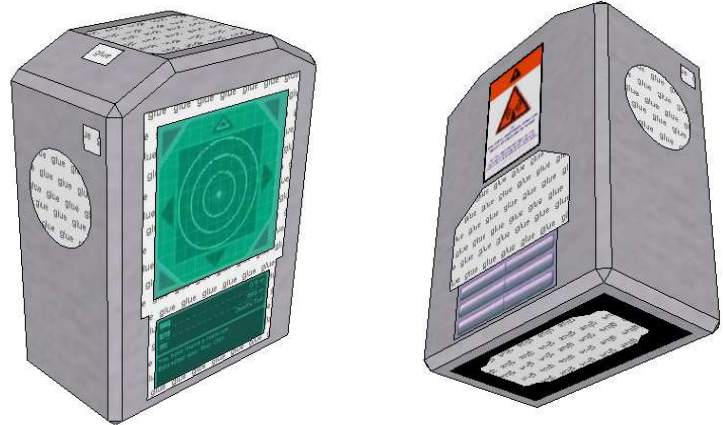
Paper size: A4

The energy matter finders are divided in 12 sections. Assemble the individual sections and then join them all.

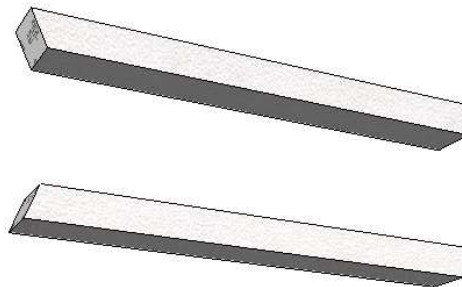
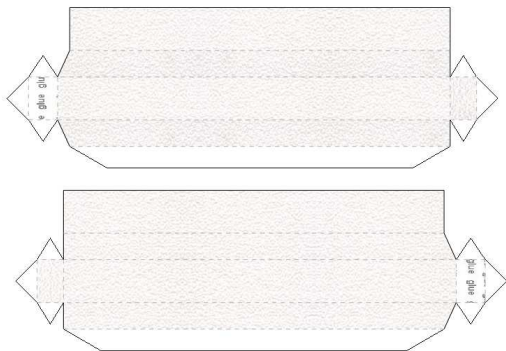
Section 1:



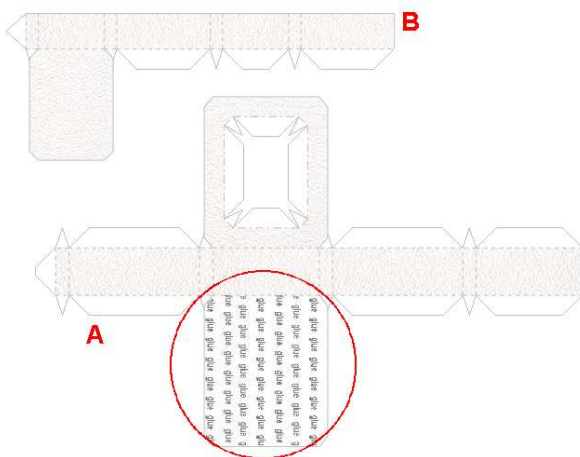
Assemble **A** and **B** individually. Glue **B** to **A** starting by the bottom tab (*). You might need to butcher some of the “glue glue” faces so you can introduce a pencil or a finger to apply pressure to the final tabs.



Section 2:



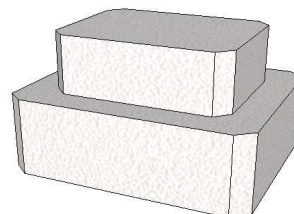
Section 3:



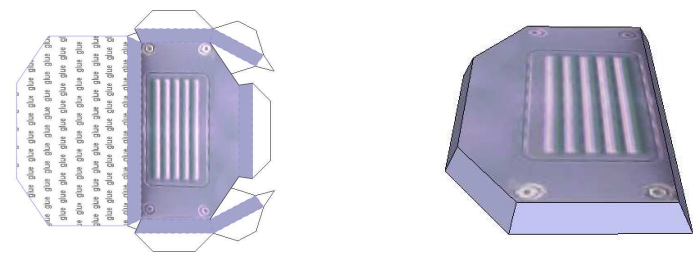
Assemble **A** but *do not* glue the circled face yet. You will need this opening in the next step.

Assemble **B** and glue to **A**.

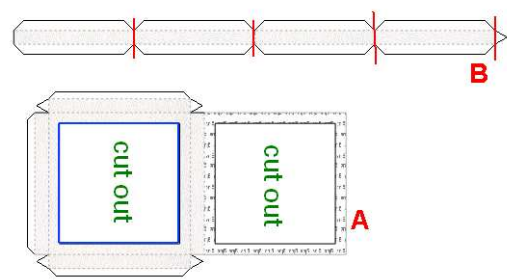
Now you can close **A**



Section 4:

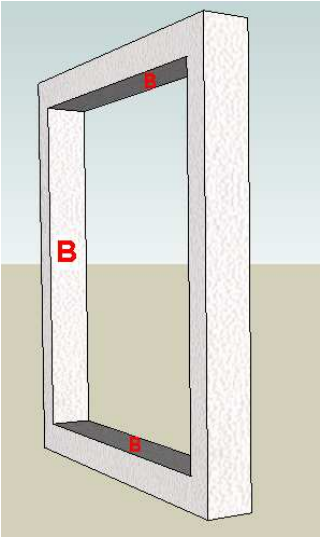


Section 5:

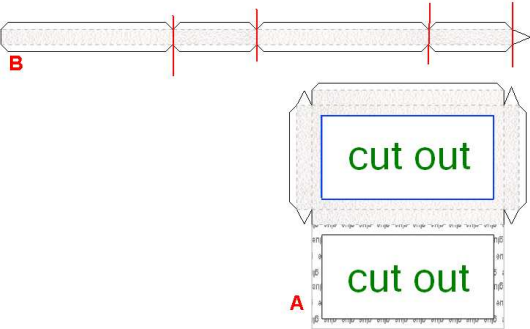


Glue **B** to **A** at the edges marked in blue. The folds marked in red are *Valley* folds, so the textured faces of **B** will be facing out when assembled.

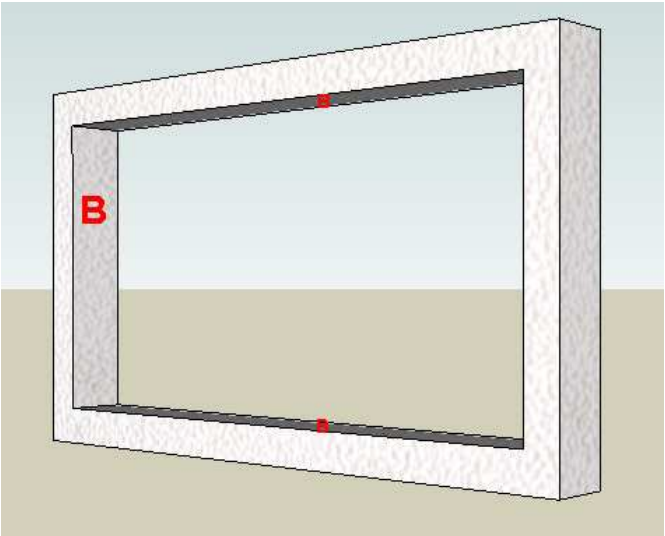
Assemble **A**.



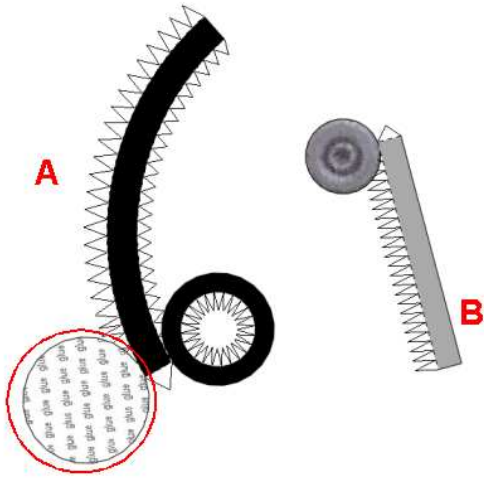
Section 6:



Assemble the same way as section 5.



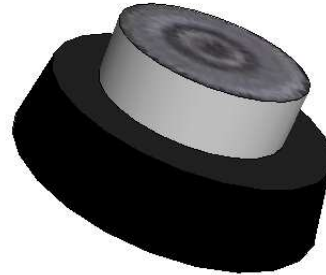
Section 7:



As you can see there are no fold marks in the long stripes of this section. This is on purpose to avoid the polygonal look. For this section you will need a small rod or a pencil. It will help you to give the desired curved shapes to the button.

Check this video to learn the technique:

<http://www.youtube.com/watch?v=8hCwL4HW12w>

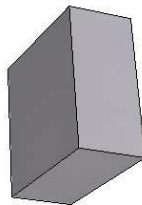
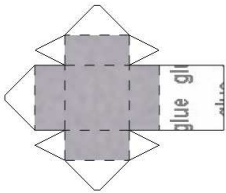


Assemble **A** but do not glue the circled face yet.

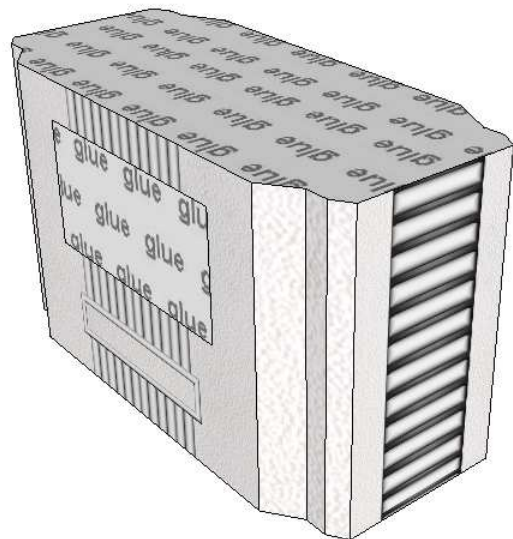
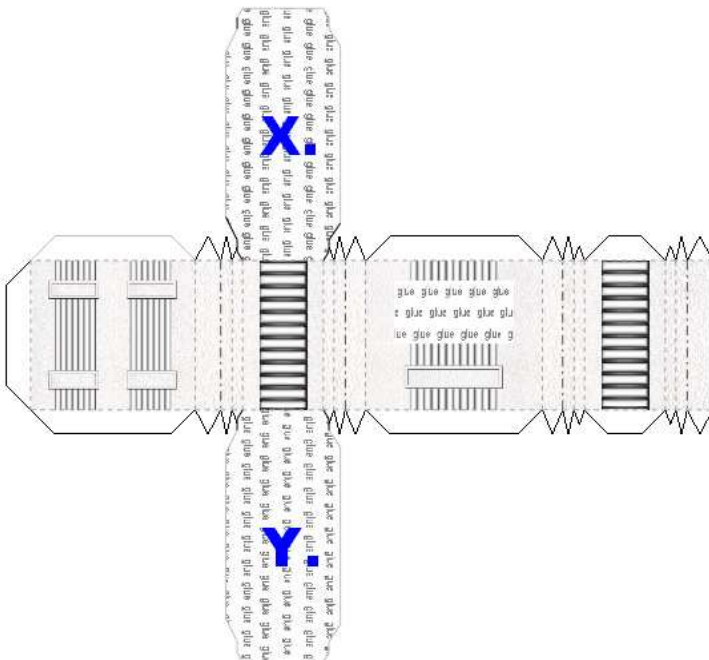
Assemble **B** and glue to **A**.

Close **A**.

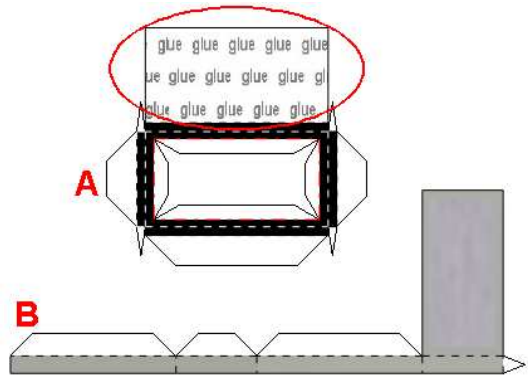
Section 8:



Section 9:

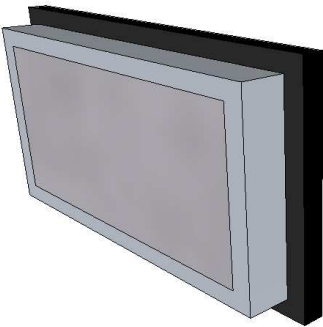


Section 10:



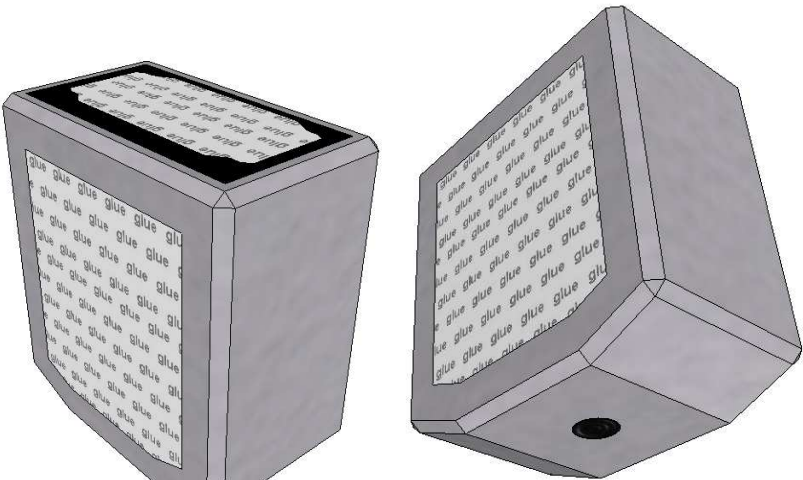
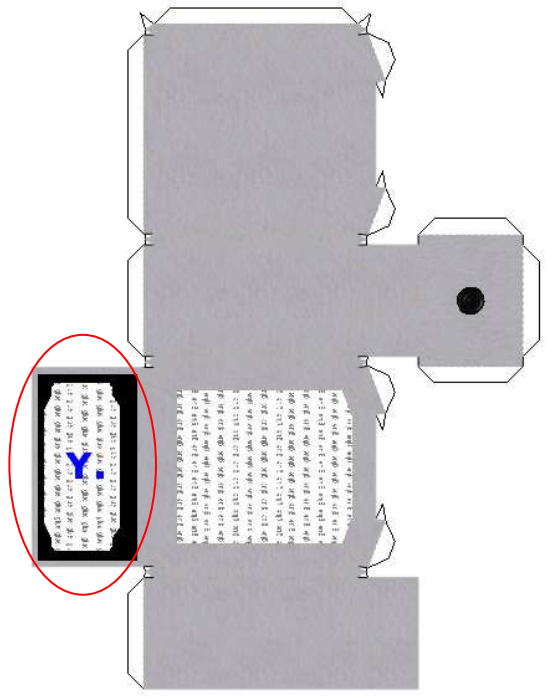
Assemble **A** but do not glue the circlet face yet. The lines in red are *valley folds*.

Assemble **B** and glue to **A**. Close **A**.

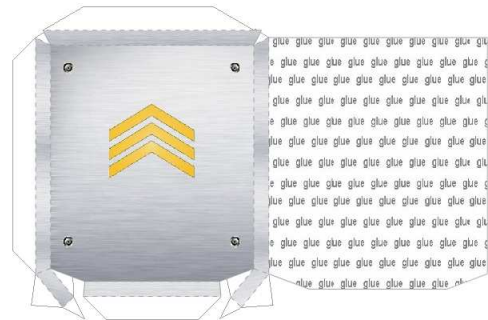


Section 11:

Glue the circled face last.

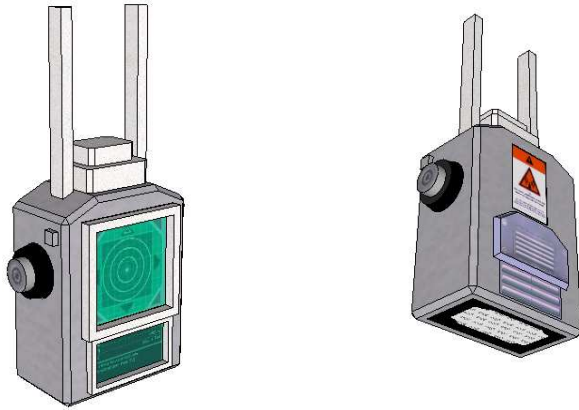


Section 12:

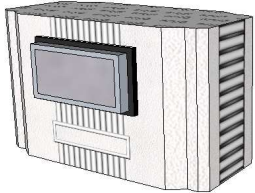


FINAL ASSEMBLY

Glue sections 2 - 8 to section 1 in the specified places



Glue section 10 to section 9



Glue section 12 to section 11



Glue section 1, 9 and 11 (**X** to **X** and **Y** to **Y**). Make sure all the sections are facing in the right direction ☺.



Now, grab your finder, go outside and run around your neighborhood making Swoooooosh, kaboom and beep beep sounds. + rep if you do it in your underwear.