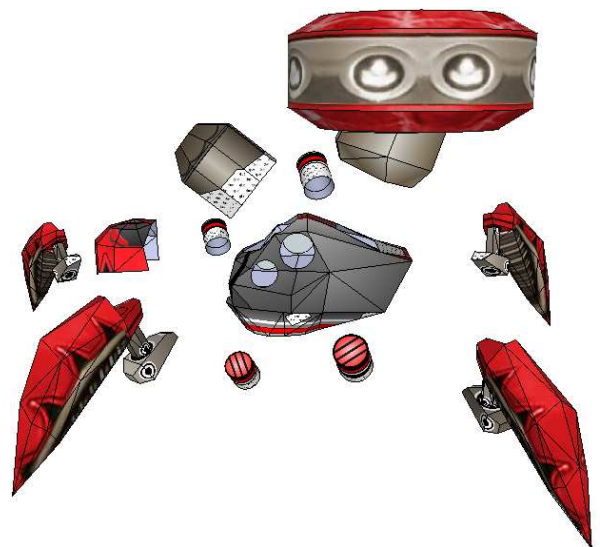
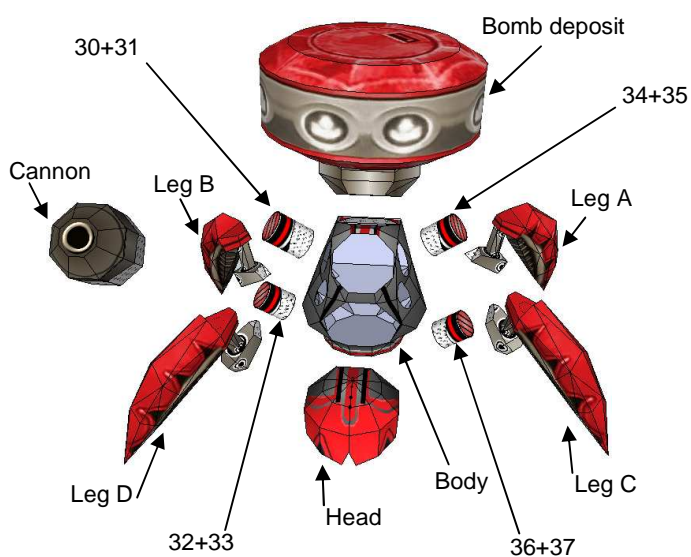


Entropia Universe Fan Art Papercraft

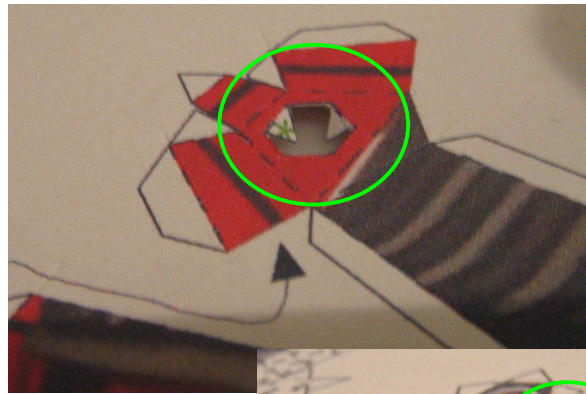
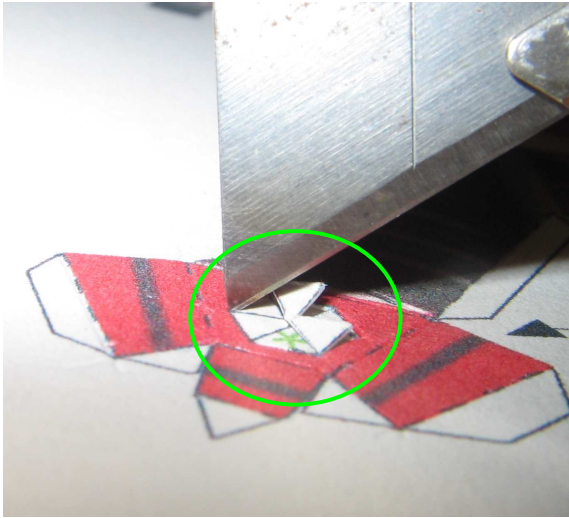
Spider Bomber Robot

Assembly instructions
by Gustav "Malasuerte" Sagitta

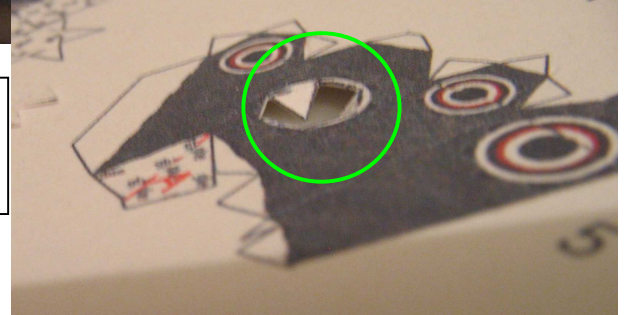


You cannot sell this model

The legs:

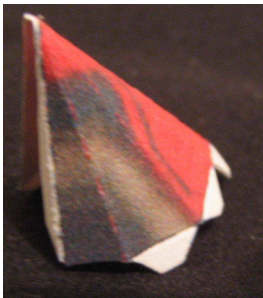


Cut these holes in all the legs before cutting the pieces.



LEG A

1.



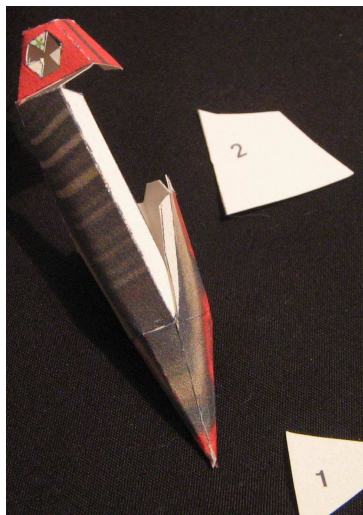
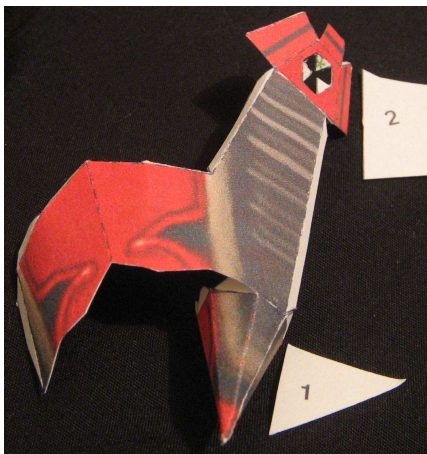
Assemble 1



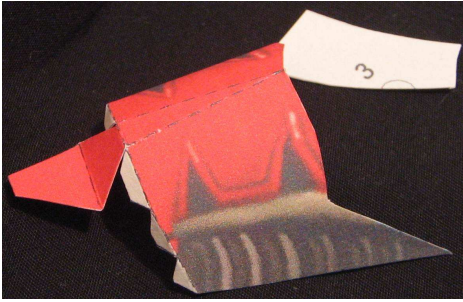
2.



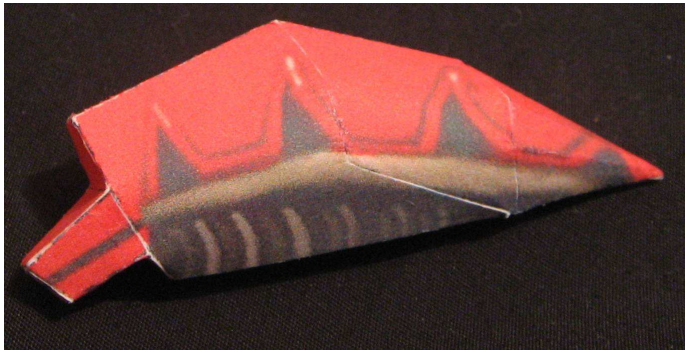
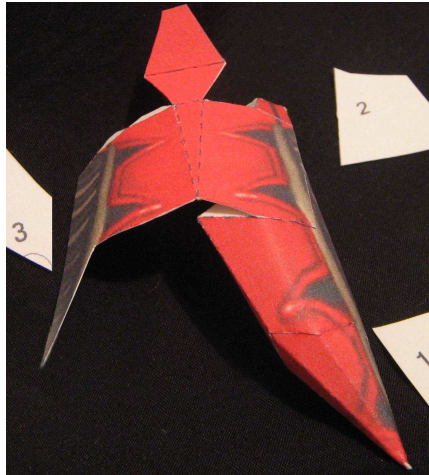
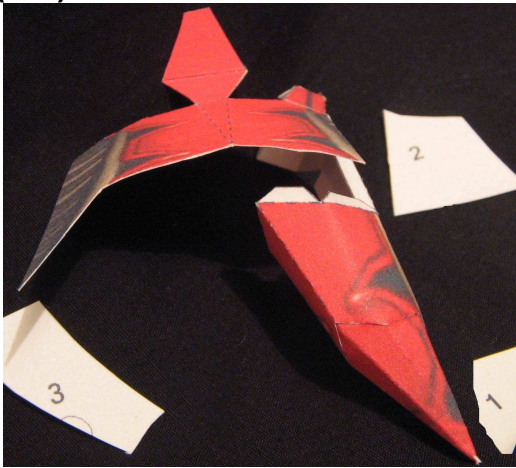
1 + 2.



3.



(1+2) +3



4.



Assemble 4



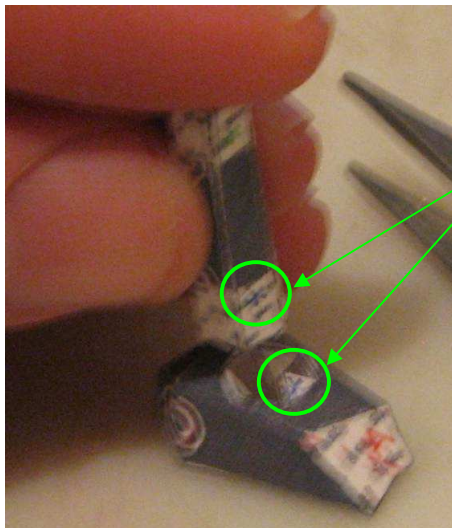
5.



Assemble 5

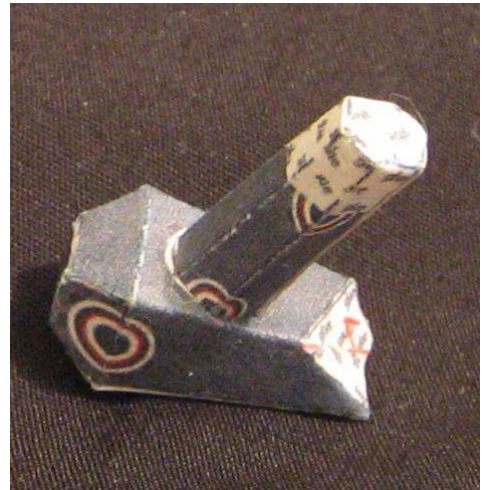


4+5.



Use the **BLUE** asterisks as a guide for the right location and direction of the pieces.

It is important to use glue on all the marked faces of 4, including the top one, and apply pressure so 4 rests firmly inside 5.



(1+2+3) + (4+5)



Use the **GREEN** asterisks as a guide for the right direction of the pieces.

It is important to use glue on all the marked faces of 4, including the top one, and apply pressure so 4 rests firmly on the inside of 3.



Leg A finished



Repeat the same steps for the other 3 legs. Just be aware that the red dotted fold line on piece #10 is a valley fold, like on piece #5, but the red dotted fold lines on pieces #15 and #20 are mountain folds.

LEG B



LEG C

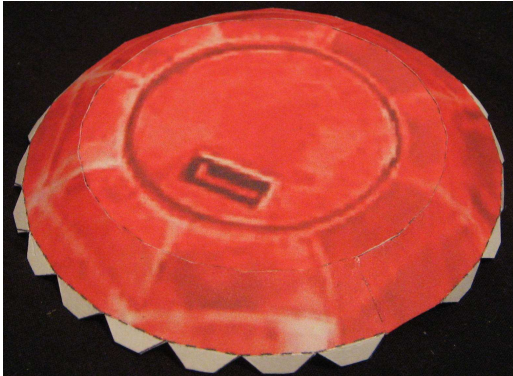


LEG D

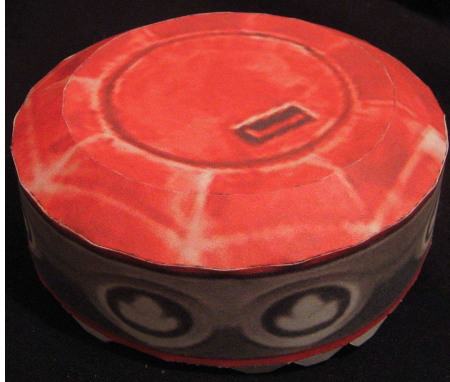


The Bomb Deposit:

21+22



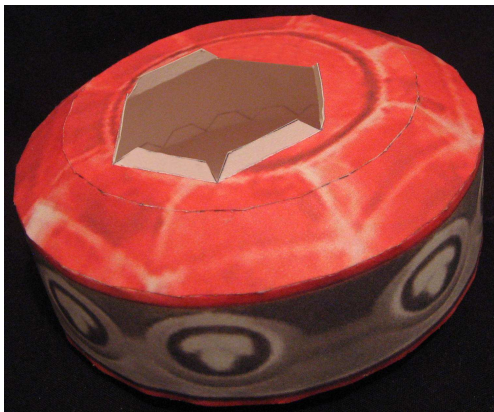
(21+22) + 23



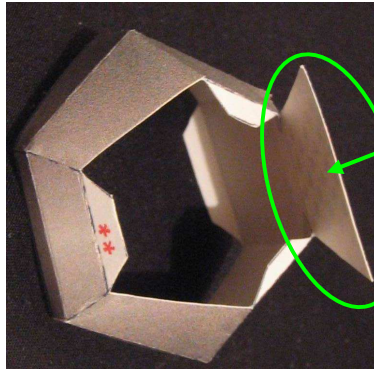
(21+22+23) + 24.



(21+22+23+24)+25



Assemble 26



Don't close this face until you glue 26 to the rest of the bomb deposit.

(21+22+23+34+25) + 26 Bomb deposit finished

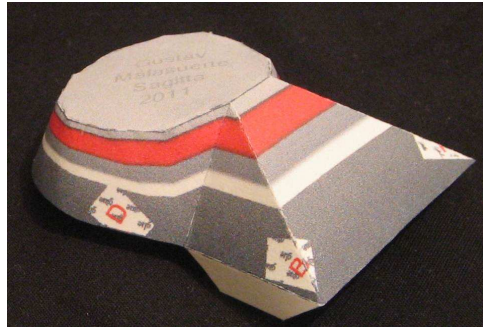


The body:

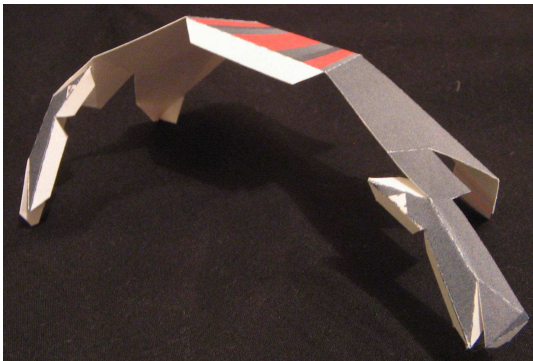
27.



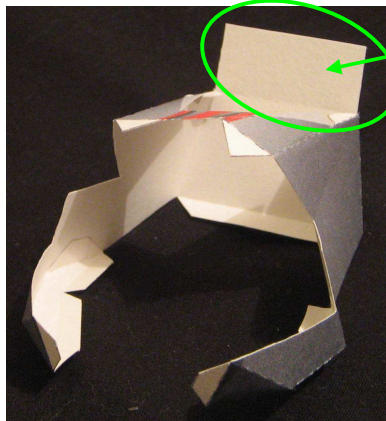
Assemble 27



28.

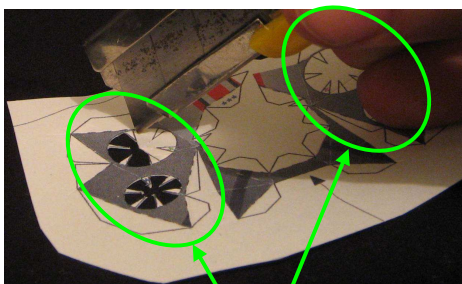


Assemble 28.



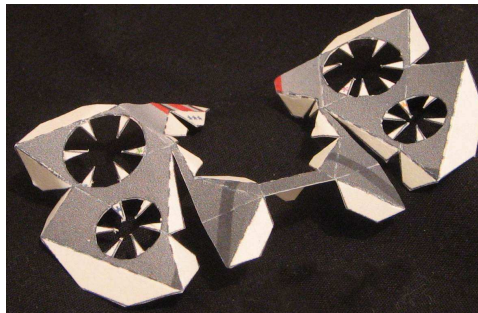
Don't close this face until after you glue the legs to the body. This will give you enough room to apply pressure from the inside of the model.

29.

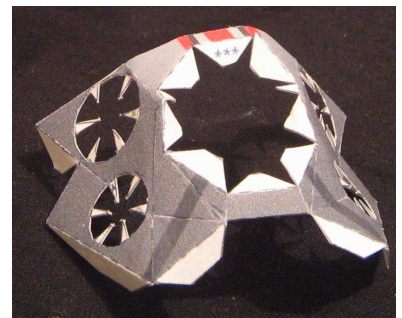


Cut these holes before cutting the piece.

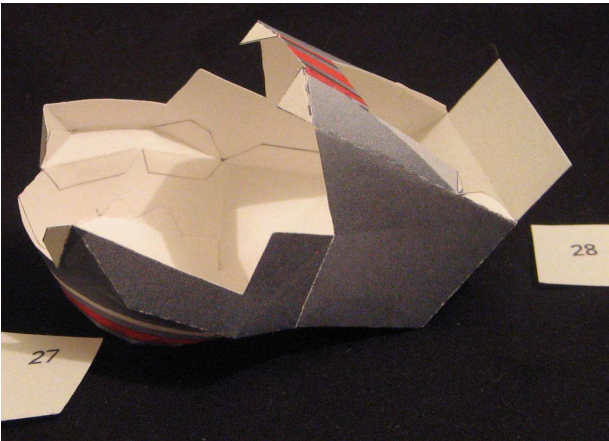
29.



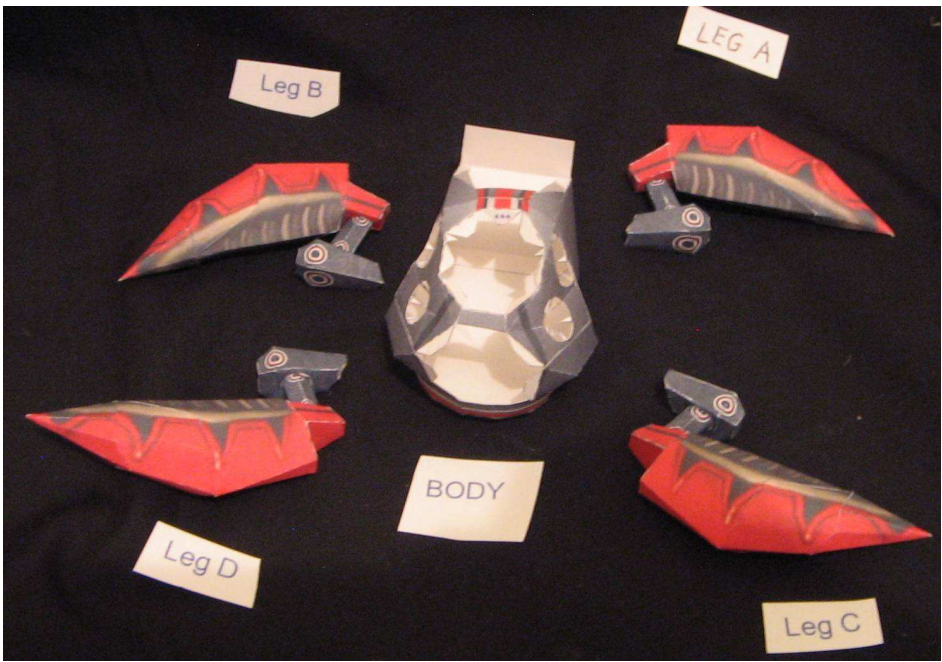
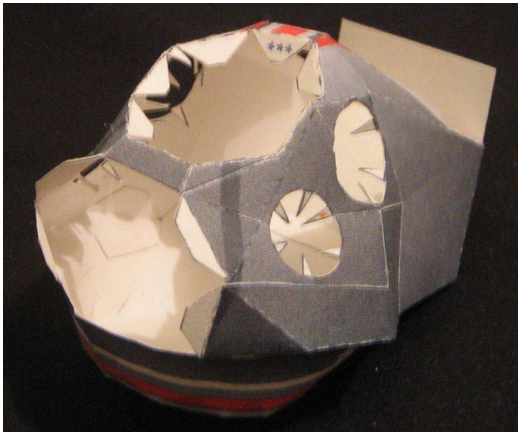
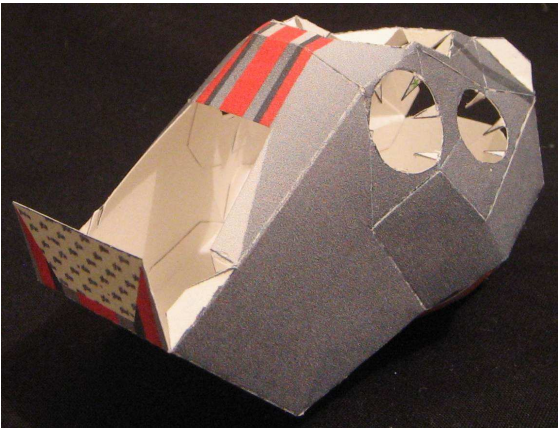
Assemble 29



27+28

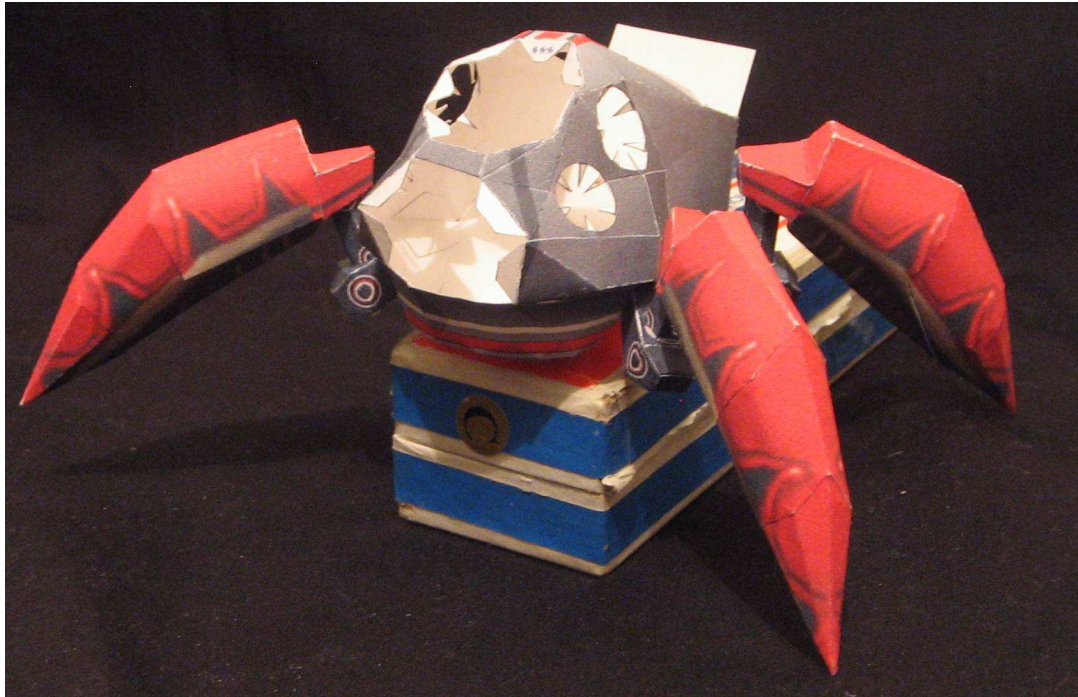


(27+28) + 29



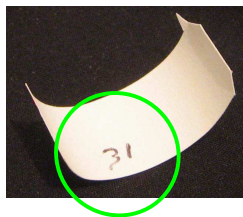
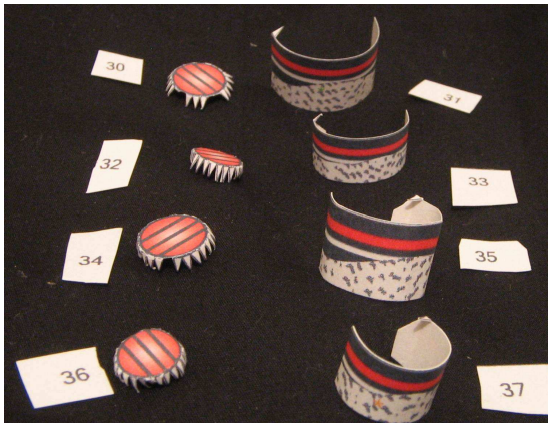
Attaching the legs to the body

Use the red letters in both the legs and the body as guides to the location of each leg. Apply glue in both sides (body and leg) and hold them together using the hole on top of the body to apply pressure from the inside. After attaching the 4 legs leave the model to dry for 30 to 60 minutes letting it rest on its belly and with the legs in the air so there is no stress on the joints. Or you can hang it from the body, just make sure the legs don't hold any weight for at least 30 minutes.



Meanwhile you can assemble the other parts.

30 to 37



Mark each piece
to avoid
confusion later



The Cannon:

38 + 39



The head:

40+41

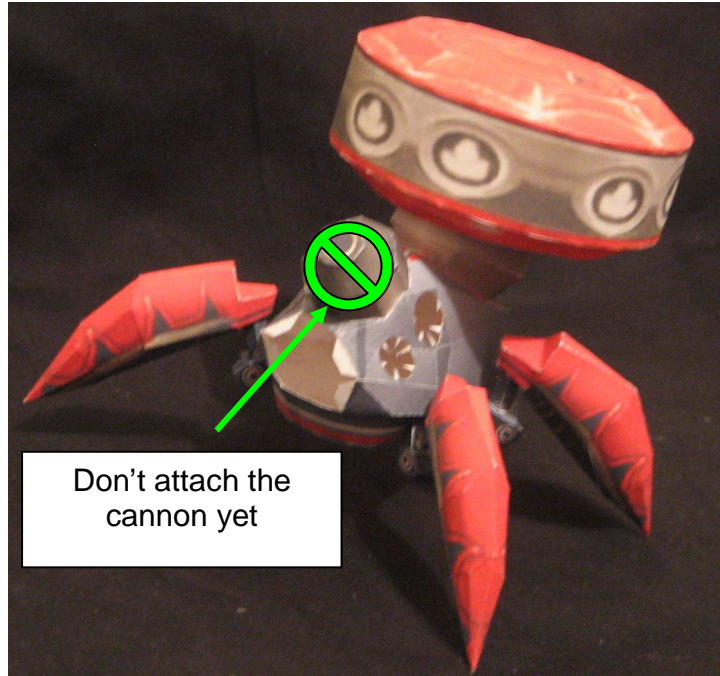


(40+41) + 42

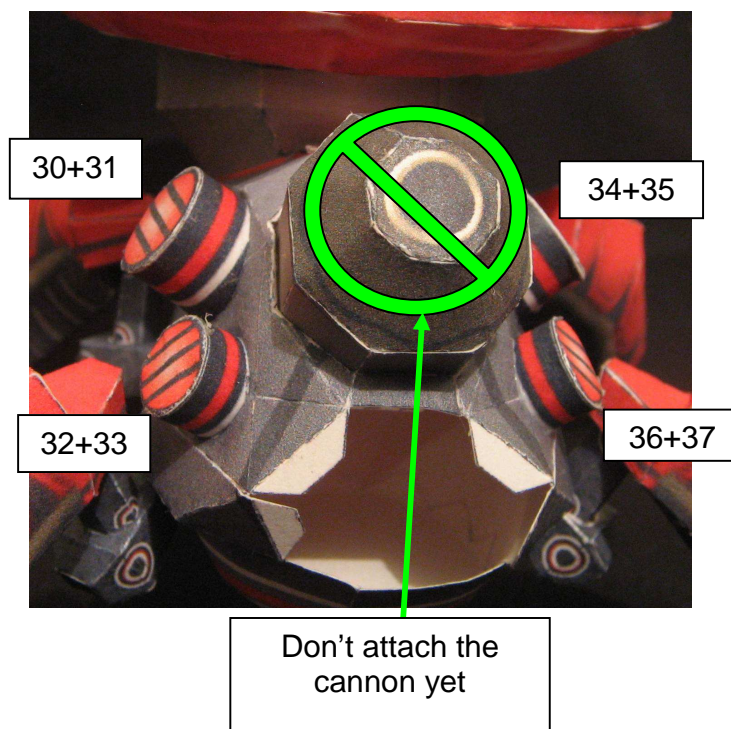


Final assembly:

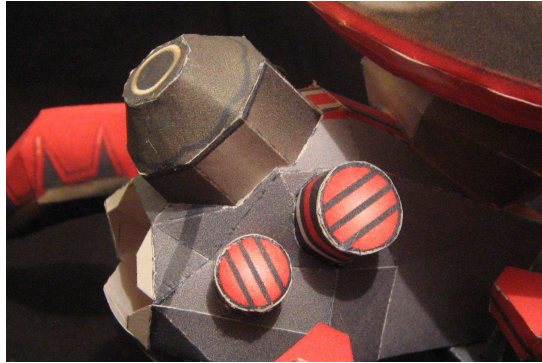
1. You can now close the face you left open on 28. Then glue the Bomb deposit to the body. (Putting the cannon first was a bad idea; it gets in the way when attaching the other parts)



2. Glue the four cylinders to the sides of the body. The colored asterisks on the cylinders and on the flaps will show you the right location and appropriate position of each cylinder. Make them match as accurately as possible.



3. **Now** you can put the cannon. Use the blue asterisks on both the body and the cannon as a guide for the right orientation of the piece.



4. Finish the model by attaching the head.



Done!

